



WiFi Module

15Z36 - VEWIFI1A (1-13) - CR, EC, PE, HO

15Z38 - VEWIFI1B (1-11) - CO, GT, MX, PA, PR



Thank you for selecting LENNOX air conditioners. Please read this manual carefully before operation and keep it for further reference.

To Users

Thank you for selecting LENNOX product. Before installing the product, please read this instruction manual carefully to know well about the product and use it correctly. In order to install and use the product correctly to reach the expected operational effect, the following instructions are hereby issued:

- (1) The appliance is not intended to be used by the people with physical, sensory or mental handicap or the people without using experience and knowledge (including children), except that they are supervised or guided by a person responsible for their safety when using the appliance. Children should be supervised to ensure that they do not play with the appliance.
- (2) This instruction manual is universal manual, some functions introduced in this manual are only applicable to specific products; all the illustrations and information in this manual are only for reference, and the control interface should be subject to the actual interface.
- (3) In order to better meet the customers' demand, our company will improve the product continuously and we have the right to conduct necessary modification at any time due to the reason of sales or production, and will reserve the right of modification without further notification.
- (4) We will bear no responsibility for the personal injury, property loss or damage of equipment due to improper installation and debugging, unnecessary maintenance,

non-observance of related national laws, regulations, and industrial standards,
violation of any stipulations of this instruction manual, etc.

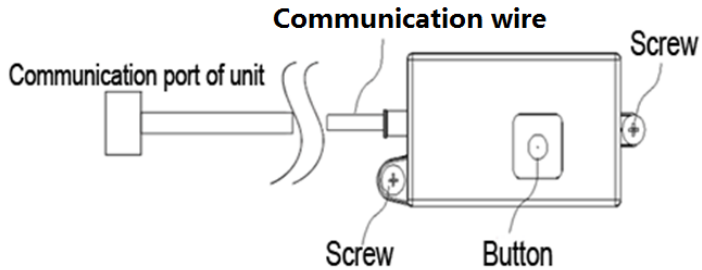
- (5) The final authority for the interpretation of this instruction manual belongs to LENNOX.

Contents

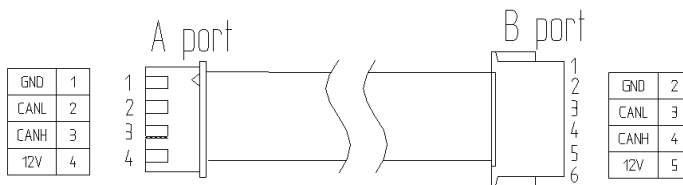
1 SCHEMATIC DIAGRAM OF ‡ 7 U	1
2 DIMENSION OF ‡ 7 U	3
3 PICTURE OF ‡ 7 U	4
4 FITTING LIST OF ‡ 7 U	5
5 INSTALLATION OF ‡ 7 U	6
6 OPERATING GUIDELINE OF APP	8

1 Schematic Diagram of WiFi Module

1.1 Diagram of outline

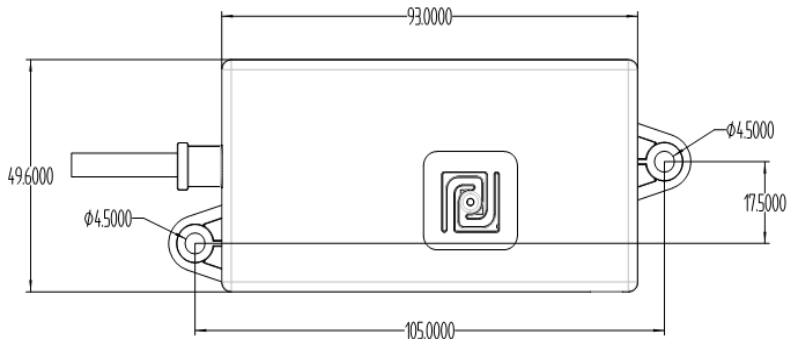


1.2 Diagram of communication port



WiFi Module can work with smart phone, LENNOX Global and wireless router, which can realize long-distance monitor, daily management, scene management, temperature setting, and related functions.

2 Dimension of WiFi Module



Note: unit of the above length is mm.

3 Picture of WiFi Module




3.1 Front view of WiFi Module



3.2 Rear view of WiFi Module



4 Fitting List of WiFi Module

Name	Photo	QTY	Unit	Purpose
Tapping screw		2	piece	To secure WiFi Module
Rubber particle		2	piece	To secure the screw
High-temperature tie line 200m		3	piece	To fix the wire

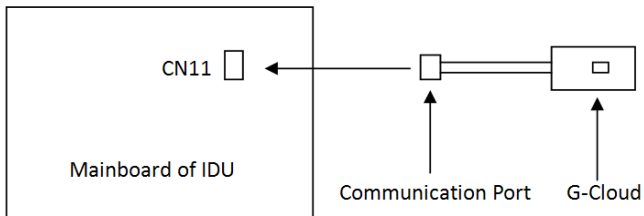
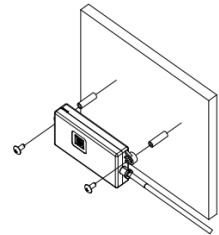
5 Installation of WiFi Module

Notes:

- ① WiFi Module can connect to any IDU which can support the installation;
- ② Please install in the position where has the strongest WiFi signal in a room that is close to the indoor router as much as possible.

Installation steps of WiFi Module:

Connect the communication port of WiFi Module to the corresponding communication port CN11 in mainboard of IDU, and then secure the WiFi Module onto the proper position of wall (user can use screw to secure the WiFi Module).



1) Notice for wire connection

Before installation, please cut off the power supply of IDU. Hot-line work is not allowed during the whole installation.

2) Instructions for installation

◆ During installation, please put the panel of WiFi Module with the reset button facing the user, which is convenient for subsequent reset operation.

◆ It is not allowed to install the WiFi Module onto the position where is wet.

◆ Standard fitting wire length of WiFi Module is 2200mm. If the length cannot satisfy the installation requirement, please purchase the communication wire with the same material from the market (reference specification of wire material: UL2464 26AWG; A port: XH-4P-K3 (blue), with lock and retainer; B port: ZHR-6);

◆ Due to different wall materials, when installing the WiFi Module, fittings can be flexible chosen. If there are any other special requirements, please purchase corresponding fittings by yourself according to the dimension of WiFi Module;

◆ Securing position of WiFi Module differs due to different unit models. Please install the unit according to user demand and actual installation position of unit model (installation instructions of WiFi Module as shown in the photo are only for reference).

6 Operating Guideline of App

6.1 Download of App

Through network of mobile phone and household wireless router can view the control and operating status of product.

Please download "Lennox Global" from App Store or Google Store.

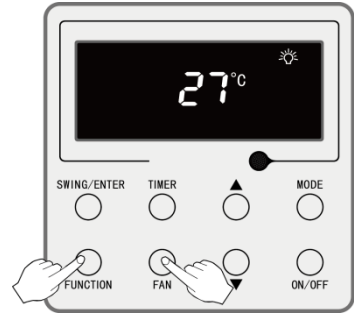
Warm tips:

“LENNOX Global” supports the smart phone of iOS 8.0/Android4.4 and above versions. With the upgrade of product, the contents of App may be changed, please subject to the actual display and operation of app.

6.2 Connect/reset WiFi (2 methods)

Method 1 (display board):

Under power-off status of master wired controller of IDU, press and hold the “Function” button and “Fan” button simultaneously in the master wired controller for 5 seconds (as shown below), when the wired controller displays “oC”, it means the reset is done.



Method 2 (WiFi Module):

Press and hold the reset button of WiFi Module for 5 seconds, when the indicator flickers, it means the reset is done

Note: if the router is altered or the name and passwords of router are altered, the setting should be reset.



Contact us at +1-305-718-2901
lennoxglobalhvac@lennoxintl.com

© 2019 Lennox Industries Inc.

For a complete list of the registered and common law trademarks
owned by Lennox Industries Inc., please visit www.lennox.com



66129932561